

Technical Specification

DATA	SRM 130	SRM140	SRM 150
Rated output of - 650 ml Beer Bottles	16000 BPH	20000 BPH	28000 BPH
Total Time	16 Min	18 Min	18 Min
Caustic Treatment	8 Min	9 Min	9 Min
No. of Soak Tanks	3	4	4
No. of Bottles / Row	25	25	35
No. of Rows / Machine	168	243	243
No. of Rows in Caustic	106	125	125
Power Consumption	58 kw	60 kw	80 kw
Steam at 3.0 Kgs / Cm ²	600 Kgs / hr	800 Kgs / Hr	1050 Kgs / hr
Water at 2.5 Kgs / Cm ²	5.0 m ³ / Hr	6.5 m ³ / Hr	9.0 m ³ / Hr
Air At 6 Kgs / Cm ²	2.0 M ³ / Hr	2.5 m ³ / Hr	2.5 m ³ / Hr
Machine Weight	22 Tonne	28 Tonne	35 Tonne
Service Weight	36 Tonne	45 Tonne	56 Tonne

Note: Due to continuous improvements, specifications are subject to change without notice.

Salient Features

- ✦ Advanced loading / unloading system
- ✦ Multiple Soak Tanks
- ✦ Higher Treatment Times
- ✦ Efficient Label and Foil Separation System
- ✦ Automatic Lye Measurement and Dosing (Optional)
- ✦ Hydrogen Gas Extractors (Optional)
- ✦ 100% Condensate Recovery System
- ✦ Continues drive system with multiple drive chain
- ✦ Moving Sprays System
- ✦ Low steam consumption
- ✦ Fully Automatic Electrical Panel and Operator Panel with digital readouts
- ✦ Variable Speed Control
- ✦ Low maintenance, Easy Service

We also manufacture washers in smaller capacities suitable for Soft Drinks, Beer, IMFL and Fruit Juices in addition to other bottling equipments such as Fillers, Pre-mix Carbonators, Bottle Conveyors, Tunnel Pasteurizers and Packers

SHIVSU CANADA PURE FILLERS PRIVATE LIMITED

(An Authority on Packaging Equipments)

Corporate Office: "Shivsu Towers", # 149, Poonamalle High Road, Kilpauk, Chennai - 600 010

Tel: +91 - 44 - 2836 2461 to 69, +91 - 44 - 2836 6840 - 44, Fax: +91 - 44 - 2836 2470

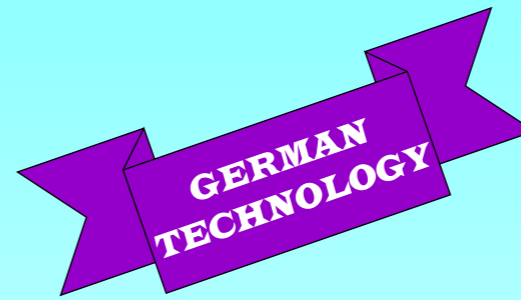
After Sales Support: +91 - 44 - 2836 2466 / 67

Email: mail@canadapurefillers.com Web: www.canadapurefillers.com

Shivsu Rita's SRM 130 / 140 / 150 Automatic Bottle Washing Machines are designed for high outputs and for cleaning very dirty bottles with labels and foils. It has 3 to 4 multi-soak tanks for intensive soak of the bottles and spraying inside, outside with high pressure sprays. The movement of the main carrier chain is continuous, giving high spraying and soaking times. The in-feed of bottles is with automatic auto-loader and out-feed by CAM system.

The machine is suitable for bottles up to 1 Litre Size Steam and water consumption is kept minimum by means of Energy regeneration and water recycling at every stage, resulting in a very energy and eco-friendly machine. Cleaning in Place (CIP) is incorporated in fresh water zone for cleaning and disinfection. Automatic Caustic measuring and dosing device will be incorporated as Optional.

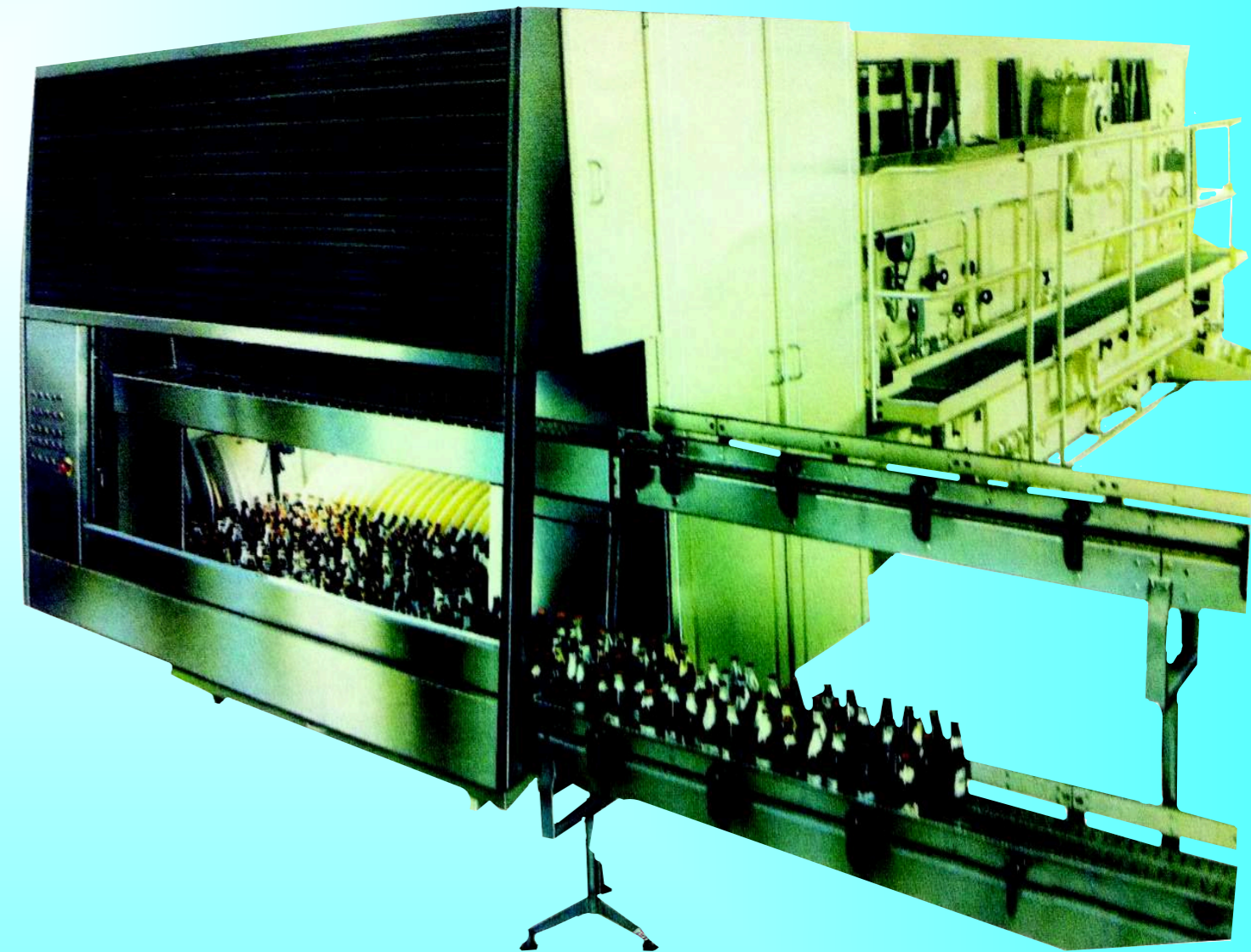
Some of bottles handled by SRM series machineries



- ✦ High Output
- ✦ Multi-soak tanks with Continuous sprays
- ✦ Complete removal of Labels and Foils
- ✦ Efficient cleaning & Sterilization of Bottles
- ✦ Eco-Friendly
- ✦ CIP Systems
- ✦ Low consumption of Steam and Water

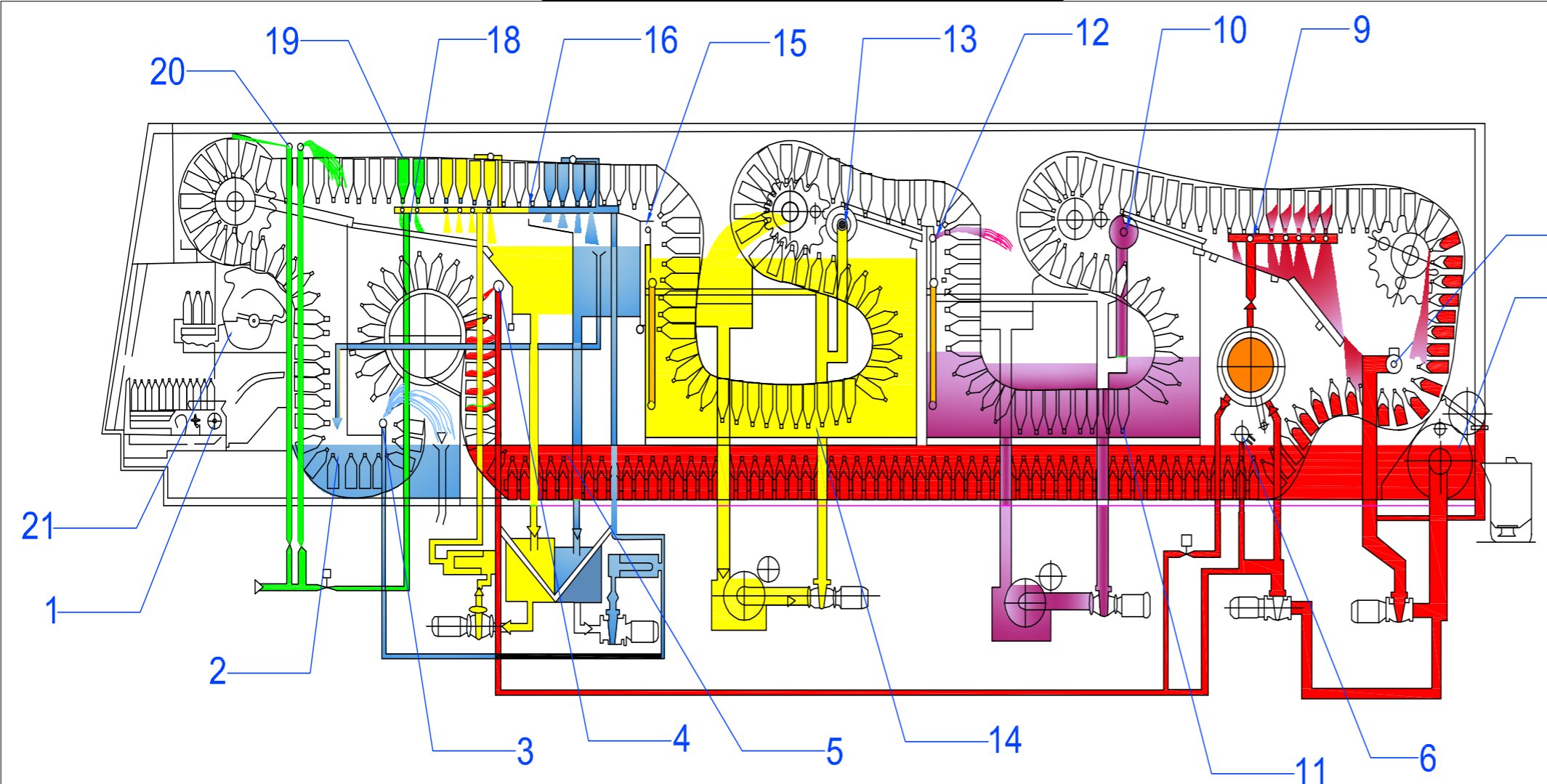
AUTOMATIC BOTTLE WASHING MACHINES

SRM 130 / 140 / 150



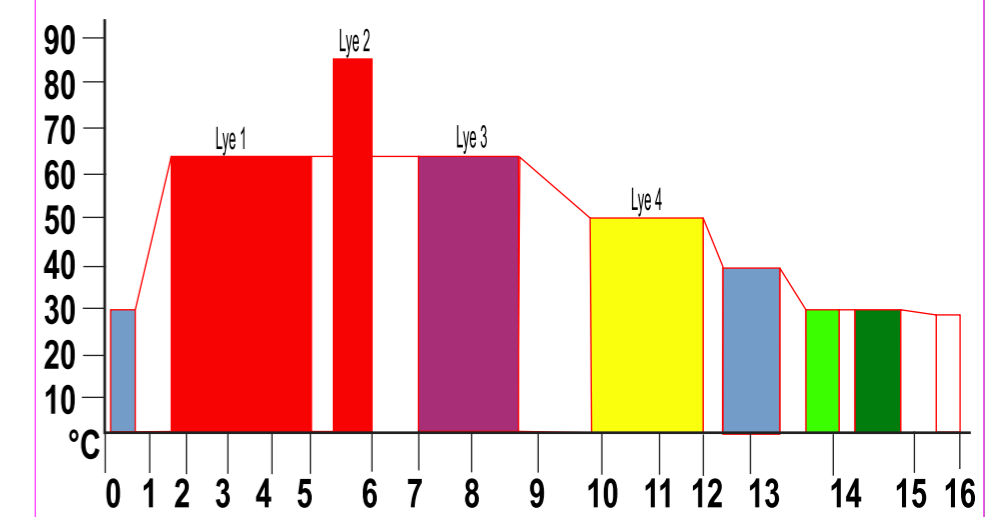
Manufacturers of Automatic Tunnel Pasteurizers and Coolers in Technical Collaboration with RITA BOTTLING

Cross section view of SRM series



- Fresh Water
- Clean Water - 30°C
- Hot Water - 40°C
- Lye - 1 - 65°C
- Lye - 2 - 80°C
- Lye - 3 - 65°C
- Lye - 4 - 50°C

Temperature - Time Diagram (SRM 140)



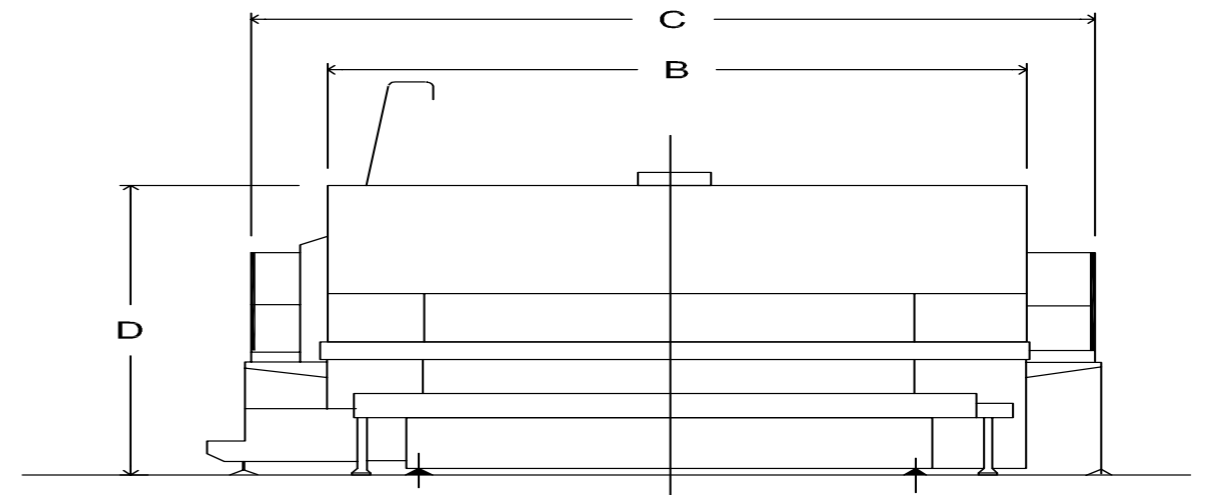
- 01. Bottle Feed Mechanism
- 02. Pre-Soak at 30°C
- 03. Pre-Spray at 40°C
- 04. Lye Flushing for Removal of dirt and labels
- 05. Main Caustic Soak at 65°C
- 06. Lye Flushing for removal of dirt and labels
- 07. Lye Flushing for removal of dirt and labels
- 08. Label removal System
- 09. Caustic lye spray at 80°C
- 10. Pre-filling and flushing of bottles with Lye
- 11. Caustic Lye soak at 65°C
- 12. External flushing of bottles with Lye
- * 13. Pre-Filling and flushing of bottles with Lye
- * 14. Caustic lye soak at 50°C
- * 15. External flushing of bottles with Lye
- 16. High pressure internal and external spray at 40°C
- 17. High pressure internal and external spray at 30°C
- 18. Fresh water internal spray
- 19. Fresh water external spray
- 20. CIP - Disinfection spray (Optional)
- 21. Bottle discharge mechanism.

Treatment

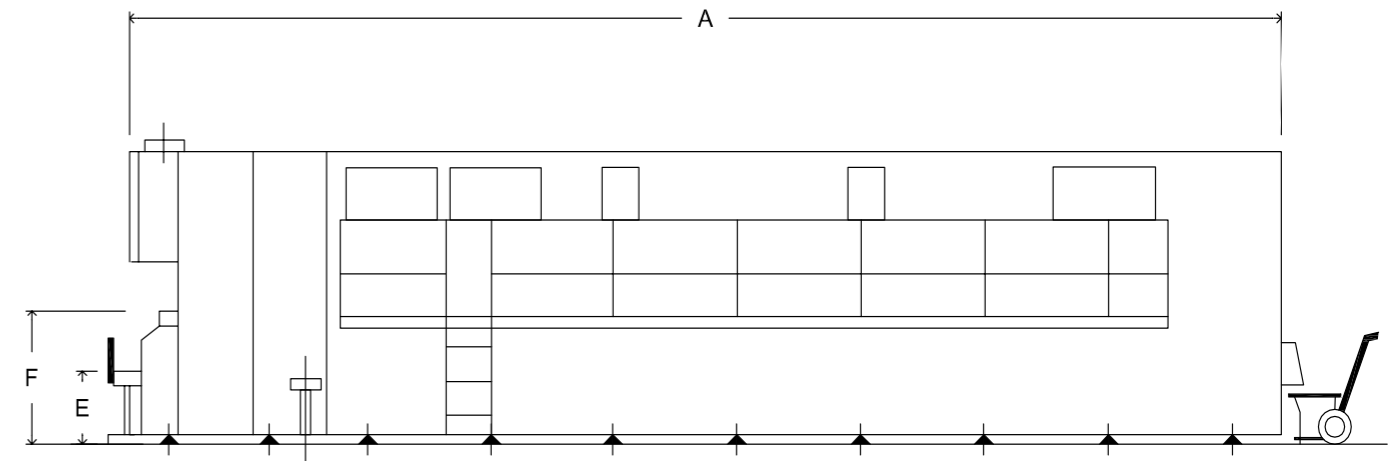
Pre-Soak - 1	30°C
Preliminary Spray	40°C
Main Caustic Soak - 2	65°C
Hot Caustic Lye Flushing	80°C
Caustic Lye Soak - 3	65°C
Caustic Lye Soak - 4*	50°C
Hot Water Spray	40°C
Hot Water Spray	30°C
Fresh Water Spray	Ambient
Drip-Off Zone	
* Not applicable for SRM 130	

Dimensions	A	B	C	D	E	F
SRM 130	9185	3976	4762	2800	700	1280
SRM 140	11680	3976	4762	2800	700	1280
SRM 150	11680	4976	5762	2800	700	1280

All dimensions are in mm



Front View



* Not applicable for SRM 130